

Customer :

customer

Customer part :

customer part

Comment :

Comment

S1=2.56

S2=3.45

Tmax=456

Tp S2=495.0

PI=0.43

HI=125

Sample =1643.10

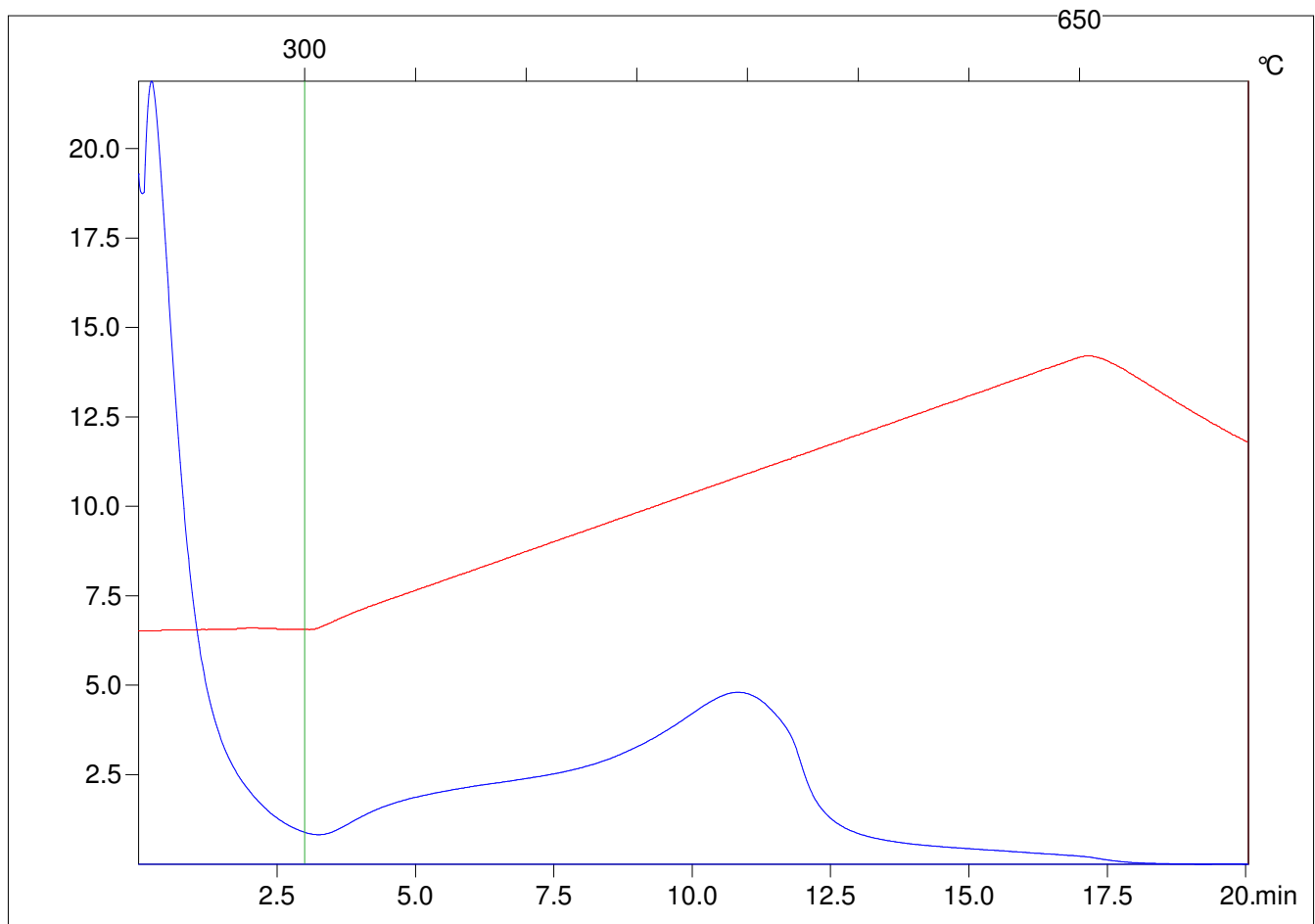
Method =Bulk Rock

Cycle=Basic

KFID(10\*9)=1444

Qty =70.7

TOC=2.75



C:\VINC\PK1792\PK049.R00 : FID pyrolysis graphic

State

Pyro Status

Oxi Status